

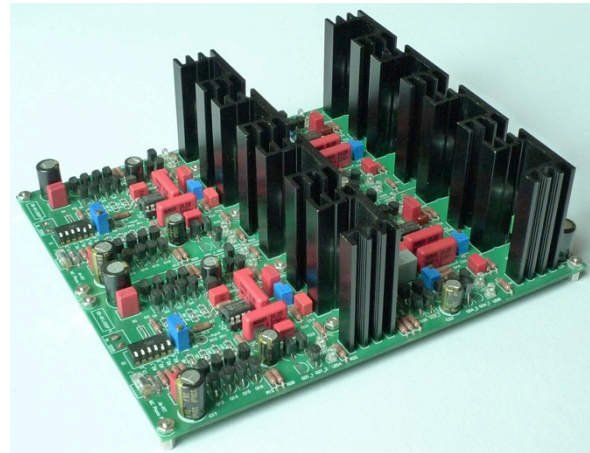
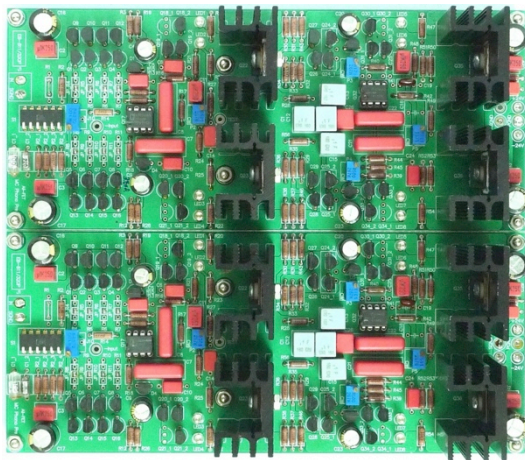


## Product List

For pricing and more information, please contact Prakrit,  
prematham@yahoo.com

### BP-320 All-FET MM/MC Phono Preamp

BP-320 is a MM/MC phono preamplifier. This is the top-of-the-line phono preamp. The PCB layout incorporates features such as ground plane, MC loading switch, and RIAA options. BP-320 is one of the best phono preamps money can buy.

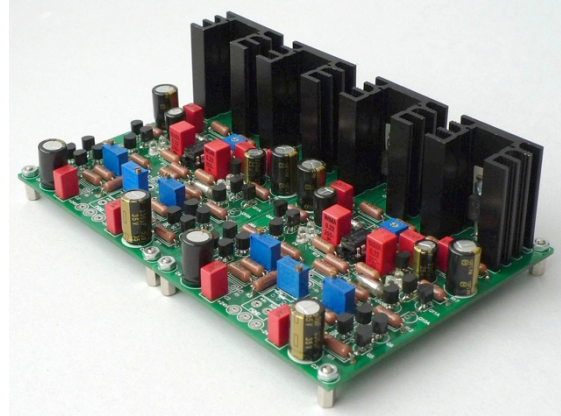
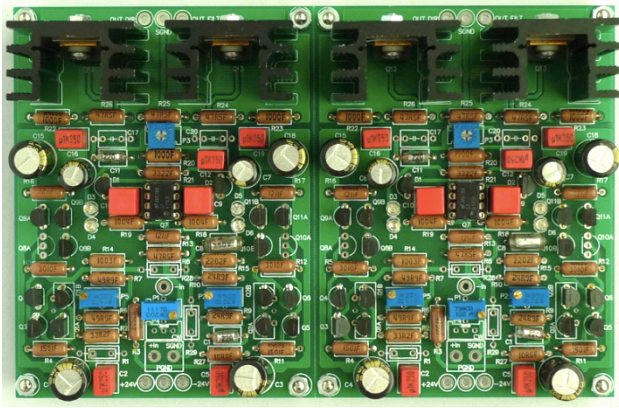


#### Highlights:

- Only JFETs are used in input and VAS stages to achieve very low noise and high-resolution amplification. High current biased MOSFET output stages ensure low output impedance and drivability.
- Very low noise
- Gain settable for 44dB(MM), 54dB, and 64dB(MC).
- Hybrid (passive-active combination) and all-passive RIAA equalization are supported.
- MC pickup loading selectable by an on-board 6-position switch
- Configurable for balanced operation

## BP-409 All-FET Line/Headphone Amplifier, I-V Converter

BP-409 is a line/headphone amplifier but it can be also configured for use as an I-V converter. It is capable of driving low impedance headphones. This all-FET design sounds full bodied and transparent with exceptional resolution and dynamics.



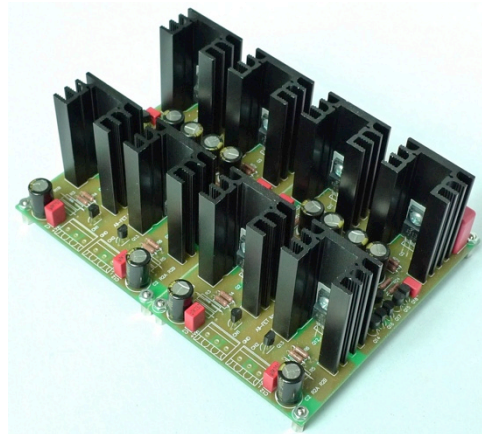
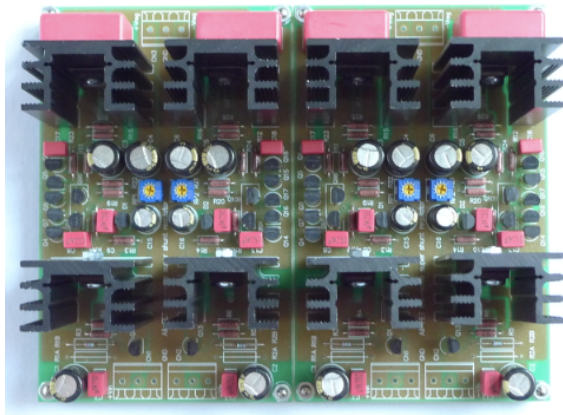
### Highlights:

- Top-of-the-line design
- All discrete, all-FET, class-A design for exceptional resolution and dynamics
- Configurable to use as a line/headphone amp, or an I-V converter
- Gain settable for 6dB/12dB/18dB/24dB
- Works with most current output DACs such as ES9018, AD1955, PCM1704, WM8740, and etc.
- Two board required for balanced operation

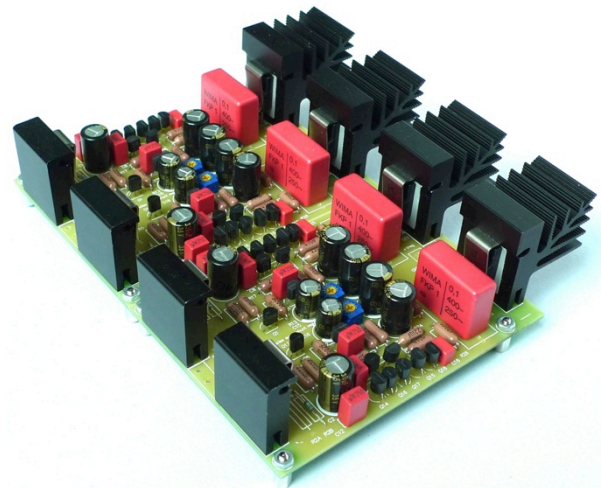
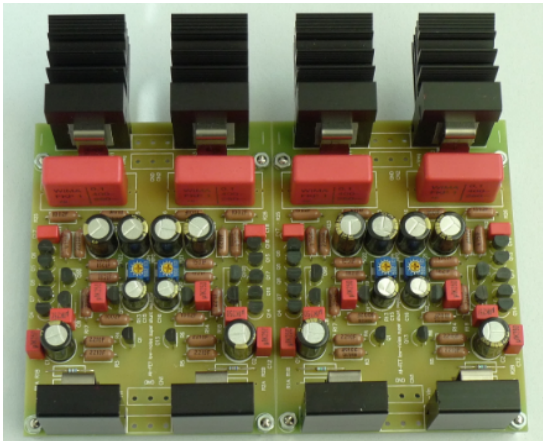
## BP-255 All-FET Super Shunt Regulator

BP-255 is a dual, wide-band, low-noise, shunt regulator. It is an ultimate regulator specially designed to use with audio stages such as line amp, I-V converter, and phono preamp. There are two version of BP-255. Version I is for high load current (200-350 mA) such as BP-320. Version II is for low to medium load current (< 200 mA) and works well with BP-409 Line/Headphone Amp, I-V converter.

We highly recommend using the BP-255 Super Shunt Reg. with our BP-320 and BP-409 modules!



BP-255 Verion I



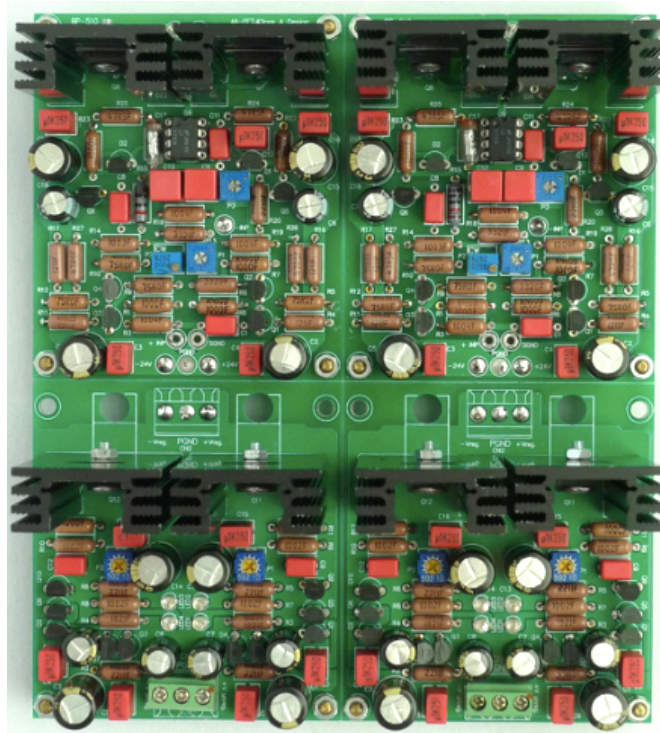
BP-255 Version II

### Highlights:

- All discrete, all-FET CCS and Error amp.
- Superior transparency, dynamics, extended sound-stage, and bass extension
- Applicable for load current from 35mA to 350mA

## BP-510 All-FET Line Amplifier/Headphone Amplifier

BP-510 is a high performance Line/Headphone amplifier specially designed for budget-minded audiophiles. The module comes readily with a matching regulator for each channel. BP-510 is a very musical design with exceptional value.



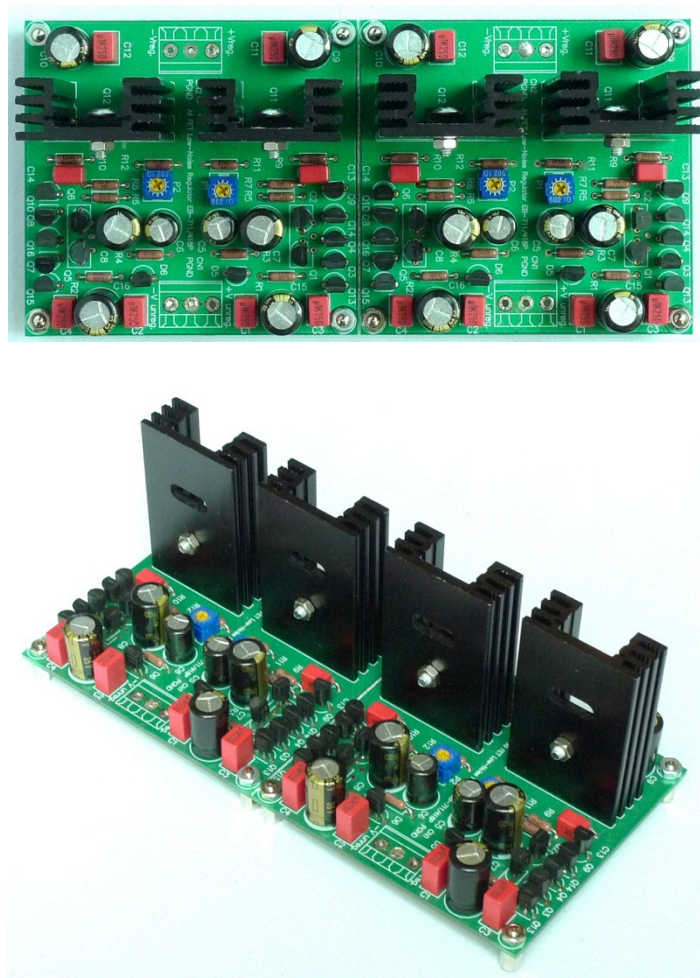
### Highlights:

- All FET design, JFET input, MOSFET VAS, MOSFET buffered output
- Non-cascoding stages for pure signal amplification
- Direct coupled design with DC-tracking servo

## BP-418 All-FET Series Regulator

BP-418 is dual, all-FET series regulators. This discrete regulator is suitable for general applications where high performance is required. BP-418 is a great upgrade from any three-terminal IC regulator. Subjectively, this all-FET regulator bears fuller sound and better dynamics and extensions than opamp-based regulators.

Maximum input voltage is  $\pm 45V$  and maximum output is  $\pm 40V$ . Maximum output current is  $\pm 300mA$  with 5V input to output voltage difference.



### Highlights

- Wideband, low noise, and using only discrete devices
- All-FET Error amp and pass devices
- Using precision, low noise, temperature-compensated devices as voltage reference
- Compact board size

# BP-507 Dual Power Supply

BP-507 is dual power supply for audio applications. The PCB can accommodate both regular two-pole capacitors and Jensen's four-pole capacitors. The rectifiers are fast/soft recovery diodes.

